

**DELIVER
POWER
FOR
BETTER LIFE!**

CATALOGUE

WALL SWITCH
& SOCKET PRODUCTS

  ISO9001 CQC

CNC
ELECTRIC





PRODUCT CONTENTS

Toggle Switch	01
Decora Rocker Switch	2-3
Standard Duplex Receptacle	04
Decora Duplex Receptacle	05
Tamper-resistant Receptacle	05
Single Receptacle	06
8-Outlet & 4 USB Outlet Power strip	07
Wall Mount Adapter charge	08
Smart Lock GFCI	09-10
SELF-TEST GFCI	11
Normal USB receptacle 4.2A 4.8A 5.8A	12
Normal USB receptacle 2.1A 2.4A 3.1A 3.6A 4.2A 4.8A 5.8A	13-16
Quick Charge USB receptacle 3.6A 4.2A 4.8A 5.8A	17-19
PD USB receptacle 4.8A	20
Straight Blade Power Receptacle	21
Receptacle & Plug	21
Dimmer	22
Nonmetallic Box	23-24
Wallplate	25-29
Wallplate with led night light	30



Toggle Switch

15Amp, 120Volt, Toggle framed AC quiet Switch,
Residential Grade, Grounding, Quick-wire Push-in & Side Wired, color is optional.

Product Features

- Ground: U-Grounding Screws
- Feature: Framed
- Amperage: 15Amp
- Voltage: 120VAC.
- HP Rating: 1/2HP - 120V AC
- Max. Amp: 12Amp
- Termination: Quick-wire Push-In & Side wired
- Material: Thermoplastic
- Body Material: Thermoplastic
- Strap Material: Steel
- Std. Color: White, Ivory, Almond, Black, Brown, Black
- Standards: UL



YCLD-2101
Single Pole



YCLD-2102
Three Way



YCLD-2103
20A, 120/277VAC
Commercial grade,
Single pole toggle switch

Decora Rocker Switch

15Amp, 120/277Volt, Decorative rocker AC quiet Switch,
Residential Grade, Grounding, Quick-wire Push-in & Side Wired, color is optional.



YCLD-2001 — Single Pole
YCLD-2002 — Three Way



YCLD-2202 — Single Pole



YCLD-2203 — Single Pole

Decora Rocker Switch

- Ground: U-Grounding screw
- Amperage: 15Amp
- Voltage: 120/277VAC.
- HP Rating:
1/2HP-120V, 2HP-240V-277V
- Max. Amp: 12Amp
- Termination:
Quick-wire Push-In & Side wired
- Material: Thermoplastic
- Body Material: Thermoplastic
- Strap Material: Steel
- Color: White, Ivory, Almond, Black, Brown, Black
- Standards: UL

Decora Com Rocker Switch

- Rocker No.: 2
- Ground: Grounding
- Amperage: 15Amp
- Voltage: 120/277VAC.
- HP Rating:
1/2HP-120V, 2HP-240V-277V
- Max. Amp: 12Amp
- Termination: Quick-wire Push-In
- Material: Thermoplastic
- Body Material: Thermoplastic
- Strap Material: Steel
- Color: White, Ivory, Almond, Black, Brown, Black
- Standards: UL

Decora Com Rocker Switch

- Rocker No.: 3
- Ground: Grounding
- Amperage: 15Amp
- Voltage: 120/277VAC.
- HP Rating:
1/2HP-120V, 2HP-240V-277V
- Max. Amp: 12Amp
- Termination: Quick-wire Push-In
- Material: Thermoplastic
- Body Material: Thermoplastic
- Strap Material: Steel
- Color: White, Ivory, Almond, Black, Brown, Black
- Standards: UL

Decora Rocker Switch



YCLD-2211

Single pole Double Switch
15A, 120/277V
Back & side wire



YCLD-2213

Single pole Switch & Pilot light
15A, 125V
Back & side wire

Product Features

- UL Listed;
- Various kind of colors available;
- Washer-type break-off plaster ear for best flush alignment;
- Captive mounting screws;
- Back and side wiring for easy installation;
- Easy-access green hex head ground screw;



Standard Duplex Receptacle

15Amp, 125Volt, 2P, 3W, With Ears Duplex receptacle, Straight Blade, Residential, Grounding, All screws backed Out contractor Pack, quick-wire Push- In & Side Wired, Steel Strap, color is optional.

Product Features

- Ground: U-Grounding Screw
- Feature: All Screws Backed Out Contractor Pack
- Amperage: 15Amp
- Voltage: 120V AC
- NEMA: 5-15R or 5-15P or 5-15R & 5-15P Combination
- Pole: 2
- Wire: 3
- Termination: Quick-wire Push-In & Side
- Face Material: Thermoplastic
- Body Material: Thermoplastic
- Strap material: Steel
- Standard Color: White, Ivory, Black, Almond, Grey, Brown
- Standards: UL



YCLD-3010

YCLD-3016

20Amp, 125Volt, 2P, 3W, With Ears Duplex receptacle, Straight Blade, Residential, Grounding, All screws backed Out contractor Pack, quick-wire Push- In & Side Wired, Steel Strap, color is optional.

Product Features

- Ground: U-Grounding Screw
- Feature: All Screws Backed Out Contractor Pack
- Amperage: 20Amp
- Voltage: 120V AC
- NEMA: 5-20R & 5-20P Combination
- Pole: 2
- Wire: 3
- Termination: Quick-wire Push-In & Side
- Face Material: Thermoplastic
- Body Material: Thermoplastic
- Strap material: Steel Standard Color: White, Ivory, Black, Almond, Grey, Brown
- Standards: UL



YCLD-3011



YCLD-3014

Decora Duplex Receptacle

15Amp & 20Amp, 125Volt, 2P, 3W, Decora plus Duplex receptacle, Straight Blade, Self-Grounding, All screws backed Out contractor Pack, quick-wire Push- In & Side Wired, Steel Strap, color is optional.

Product Features

- Ground: Self-Grounding
- Feature: All Screws Backed Out Contractor Pack
- Amperage: 20A & 20A
- Voltage: 120V AC
- NEMA: 5-15R and 5-20R
- Pole: 2
- Wire: 3
- Termination: Quick-wire Push-In & Side
- Face Material: Thermoplastic
- Body Material: Thermoplastic
- Strap material: Steel
- Standard Color: White, Ivory, Black, Almond, Grey, Brown
- Standards: UL



YCLD-3012



YCLD-3013

Tamper-resistant Receptacle



YCLD-3010(TR)

YCLD-3011(TR)

YCLD-3012(TR)

YCLD-3013(TR)



Single Receptacle

15Amp & 20Amp, 125Volt, 2P, 3W, Narrow Body receptacle, Straight Blade, Grounding, All screws backed Out contractor Pack, Side Wired, Steel Strap, color is optional.

Product Features

- Ground: Self-Grounding
- Amperage: 20Amp
- Voltage: 120V AC
- NEMA: 5-15R, 5-20R, 5-15P, 5-20P
- Pole: 2
- Wire: 3
- Termination: Quick-wire Push-In & Side
- Face Material: Thermoplastic
- Body Material: Thermoplastic
- Strap material: Steel
- Standard Color: White, Ivory, Black, Almond, Grey, Brown



YCLD-3102

8-Outlet & 4 USB Outlet Power strip

Product Features

- Input Voltage: 125VAC 60HZ
- AC Outlet Voltage: 125VAC 60HZ
- USB Outlet Voltage: DC5V
- AC Outlet Power: 1875W
- USB Outlet Power: DC5V/4.2A (Totally)
- Material: PC
- Feature: 8 US standard AC outlets & 4 USB outlet (Dual Type USB-A&C Ports), with 2M heavy duty cord delivers optimal and safe AC power
- Color: White, Ivory, Black, Almond, Grey, Brown
- Standards: UL



YCLD-URP001



Wall Mount Adapter charge

Product Features

- Input Voltage: 125VAC 60HZ
- AC Outlet Voltage: 125VAC 60HZ
- USB Outlet Voltage: DC5V
- AC Outlet Power: 1875W
- USB Outlet Power: DC5V/4.2A (Totally)
- Material: PC
- Feature: 3 US standard AC outlets & 4 USB outlet (Dual Type USB-A&C Ports), Unique, Efficient Design with Dual Slide Out Holders
- Color: White, Ivory, Black, Almond, Grey, Brown
- Standards: UL



YCLD-URZ01

Smart Lock GFCI

15Amp, 120Volt, NEMA5-15R, 2P, 3W, Decora plus duplex receptacle, straight blade, GFCI ground fault, Smart Lock, Button match face color, Back and Side 20A, Feed- thru wired, Steel strap, color is optional.

Product Features

- Ground: Grounding
- Feature: Smart Lock, button match face color or standard.
- Amperage: 15Amp and 20Amp
- Voltage: 120V AC
- NEMA: 5-15R and 5-20R
- Pole: 2
- Wire: 3
- Termination: Back and Side 20Amp feed-thru
- Face material: Thermoplastic
- Body Material: Thermoplastic
- Strap material: Steel
- Standards : ETL

Without TR GFCI



YCLD-3001

15A, Without LED light indicator



YCLD-3002

20A, Without LED light indicator



YCLD-3003

15A, With LED light indicator



YCLD-3004

20A, With LED light indicator

Dielectric---Withstands 1500V per UL 498

Current Limit:10kA

Temperature Rise: Max.30°C after 50 cyc OL 150 pct rate current



TR GFCI



YCLD-3008A

15A, With LED light indicator



YCLD-3008B

20A, With LED light indicator

TR&WR GFCI



YCLD-3008C

15A, With LED light indicator



YCLD-3008D

20A, With LED light indicator

SELF-TEST GFCI

Product Features

- Grounding: Grounding
- Feature: Smart Lock, button match face color standard
- Amp: 15&20A
- Volt: 120V AC
- NEMA: 5-15R and 5-20R
- Pole:2
- Wire:3
- Termination: Back and side 20Amp feed-thru
- Face material: Thermoplastic
- Body material: Thermoplastic
- Strap material: Steel
- Auto test function: The GFCI automatically do a self-internal test every 2 hour to ensure that it can respond to a ground fault



YCLD-3003-S



YCLD-3004-S



YCLD-3008A-S

YCLD-3008B-S

YCLD-3008C-S

YCLD-3008D-S

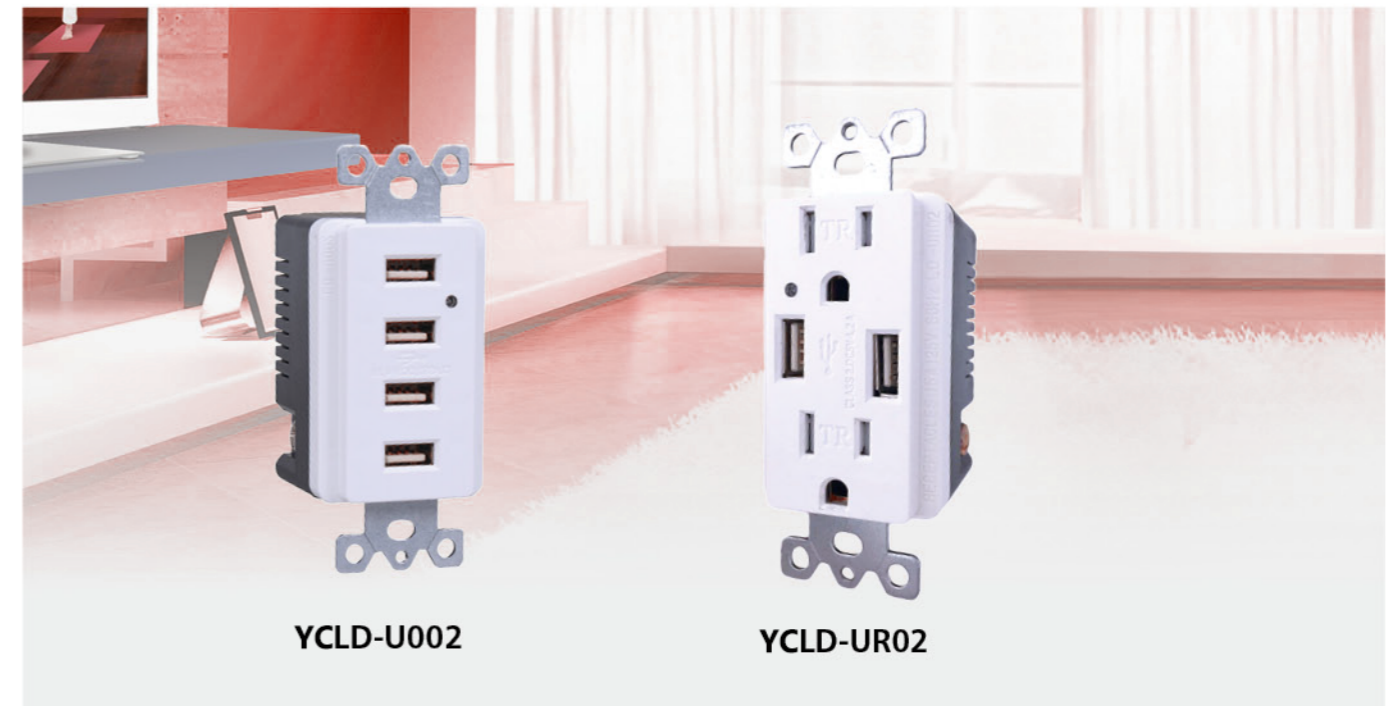
Normal USB receptacle 4.2A 4.8A 5.8A

Product Features

- Input Voltage: 125VAC 60HZ
- AC Outlet Voltage: 125VAC 60HZ
- USB Outlet Voltage: DC5V
- USB Outlet Power: DC5V/4.2A (Totally) or DC5V/4.8A(Totally) or DC5V/5.8A(Totally)
- Material: PC
- Wire Terminals: #14-#12 AWG
- Feature: Smart-intelligent identification chip, automatic identify the charging current that the device required.
- Color: White, Ivory, Black, Almond, Grey, Brown
- Standards: UL



YCLD-U001



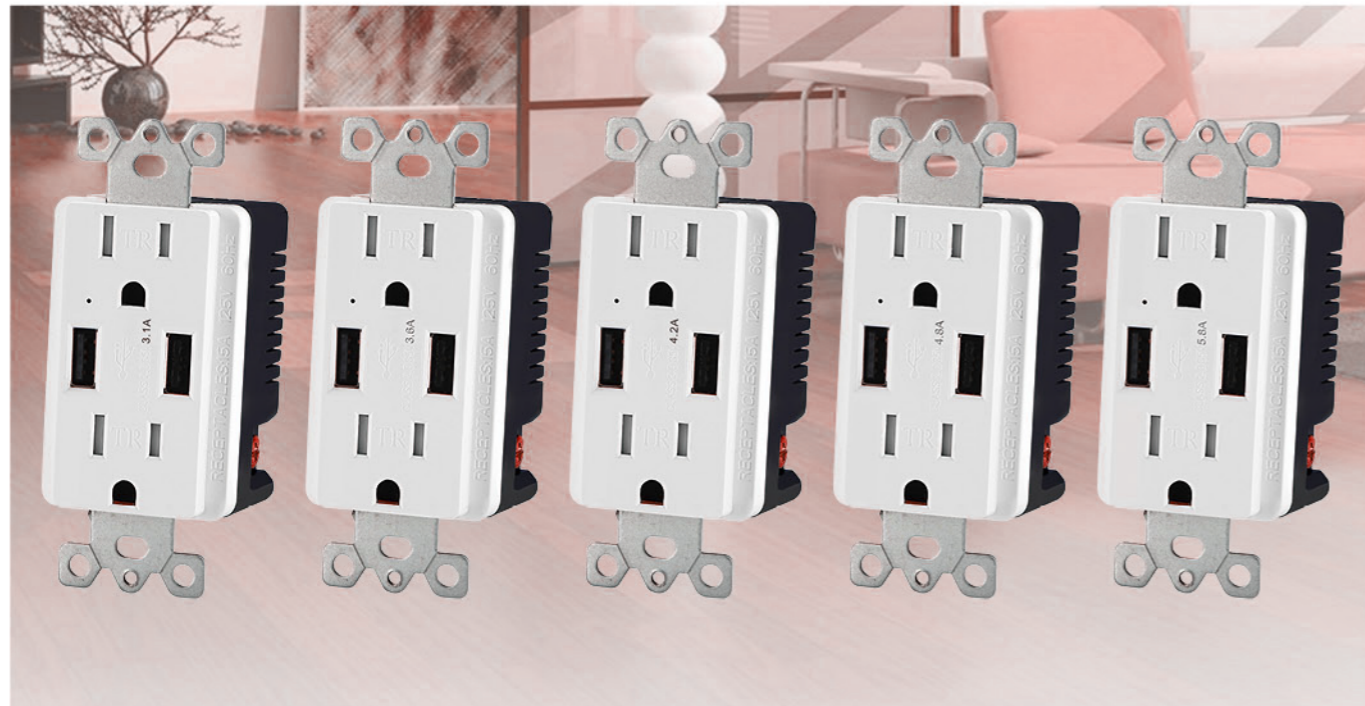
YCLD-U002

YCLD-UR02

Normal USB receptacle 2.1A 2.4A 3.1A 3.6A 4.2A 4.8A 5.8A

Product Features

- Input Voltage: 125VAC 60HZ
- AC Outlet Voltage: 125VAC 60HZ
- USB Outlet Voltage: DC5V
- USB Outlet Power: DC5V/2.1A (Totally), DC5V/2.4A (Totally), DC5V/3.1A (Totally), DC5V/3.6A (Totally), DC5V/4.2A (Totally), DC5V/4.8A (Totally), DC5V/5.8A (Totally)
- Material: PC
- Wire Terminals: #14-#12 AWG
- Feature: Smart-intelligent identification chip, automatic identify the charging current that the device required.
- Color: White, Ivory, Black, Almond, Grey, Brown
- Standards: UL



YCLD-URL 15A A-A 2.1A 2.4A 3.1A 3.6A 4.2A 4.8A 5.8A

Normal USB receptacle 2.1A 2.4A 3.1A 3.6A 4.2A 4.8A 5.8A

Product Features

- Input Voltage: 125VAC 60HZ
- AC Outlet Voltage: 125VAC 60HZ
- USB Outlet Voltage: DC5V
- USB Outlet Power: DC5V/2.1A (Totally), DC5V/2.4A (Totally), DC5V/3.1A (Totally), DC5V/3.6A (Totally), DC5V/4.2A (Totally), DC5V/4.8A (Totally), DC5V/5.8A (Totally)
- Material: PC
- Wire Terminals: #14-#12 AWG
- Feature: Smart-intelligent identification chip, automatic identify the charging current that the device required.
- Color: White, Ivory, Black, Almond, Grey, Brown
- Standards: UL



YCLD-URL 15A A-C 2.1A 2.4A 3.1A 3.6A 4.2A 4.8A 5.8A

Normal USB receptacle 2.1A 2.4A 3.1A 3.6A 4.2A 4.8A 5.8A

Product Features

- Input Voltage: 125VAC 60HZ
- AC Outlet Voltage: 125VAC 60HZ
- USB Outlet Voltage: DC5V
- USB Outlet Power: DC5V/2.1A (Totally), DC5V/2.4A (Totally), DC5V/3.1A (Totally), DC5V/3.6A (Totally), DC5V/4.2A (Totally), DC5V/4.8A (Totally), DC5V/5.8A (Totally)
- Material: PC
- Wire Terminals: #14-#12 AWG
- Feature: Smart-intelligent identification chip, automatic identify the charging current that the device required.
- Color: White, Ivory, Black, Almond, Grey, Brown
- Standards: UL



Normal USB receptacle 2.1A 2.4A 3.1A 3.6A 4.2A 4.8A 5.8A

Product Features

- Input Voltage: 125VAC 60HZ
- AC Outlet Voltage: 125VAC 60HZ
- USB Outlet Voltage: DC5V
- USB Outlet Power: DC5V/2.1A (Totally), DC5V/2.4A (Totally), DC5V/3.1A (Totally), DC5V/3.6A (Totally), DC5V/4.2A (Totally), DC5V/4.8A (Totally), DC5V/5.8A (Totally)
- Material: PC
- Wire Terminals: #14-#12 AWG
- Feature: Smart-intelligent identification chip, automatic identify the charging current that the device required.
- Color: White, Ivory, Black, Almond, Grey, Brown
- Standards: UL



YCLD-URL 20A A-A 2.1A 2.4A 3.1A 3.6A 4.2A 4.8A 5.8A



YCLD-URL 20A A-C 2.1A 2.4A 3.1A 3.6A 4.2A 4.8A 5.8A

Quick Charge USB receptacle 3.6A 4.2A 4.8A 5.8A

Product Features

- Input Voltage: 125VAC 60HZ
- AC Outlet Voltage: 125VAC 60HZ
- USB Outlet(Quick Charge): QC: 5V-12V
- USB Outlet Power: DC5V/3.6A (Totally), DC5V/4.2A (Totally), DC5V/4.8A (Totally), DC5V/5.8A (Totally)
- Material: PC
- Wire Terminals: #14-#12 AWG
- Feature: Smart-intelligent identification chip, automatic identify the charging current that the device required.
- Color: White, Ivory, Black, Almond, Grey, Brown
- Standards: UL



YCLD-URL 15A A-AQC 3.6A 4.2A 4.8A 5.8A

Quick Charge USB receptacle 3.6A 4.2A 4.8A 5.8A

Product Features

- Input Voltage: 125VAC 60HZ
- AC Outlet Voltage: 125VAC 60HZ
- USB Outlet(Quick Charge): QC: 5V-12V
- USB Outlet Power: DC5V/3.6A (Totally), DC5V/4.2A (Totally), DC5V/4.8A (Totally), DC5V/5.8A (Totally)
- Material: PC
- Wire Terminals: #14-#12 AWG
- Feature: Smart-intelligent identification chip, automatic identify the charging current that the device required.
- Color: White, Ivory, Black, Almond, Grey, Brown
- Standards: UL



YCLD-URL 15A A-CQC 3.6A 4.2A 4.8A 5.8A

Quick Charge USB receptacle 3.6A 4.2A 4.8A 5.8A



YCLD-URL 20A A-AQC 3.6A 4.2A 4.8A 5.8A



YCLD-URL 20A A-CQC 3.6A 4.2A 4.8A 5.8A

PD USB receptacle 4.8A

Product Features

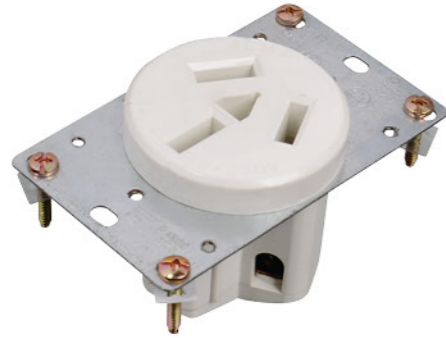
- Input Voltage: 125VAC 60HZ
- AC Outlet Voltage: 125VAC 60HZ
- USB Outlet: PD:5V-12V
- USB Outlet Power: DC5V/4.8A (Totally)
- Material: PC
- Wire Terminals: #14-#12 AWG
- Feature: Smart-intelligent identification chip, automatic identify the charging current that the device required.
- Color: White, Ivory, Black, Almond, Grey, Brown
- Standards: UL



YCLD-URL 15A A-CQC 4.8A
YCLD-URL 20A A-CQC 4.8A

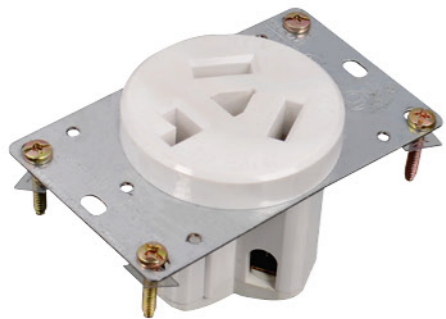
Straight Blade Power Receptacle

UL Listed, 50 Amp, 125/250 Volt, NEMA 10-30R, 3P, 3W, Flush Mtg Receptacle, Non-Grounding, Side Wired, Steel Strap, Heavy duty plastic construction



YCLD-3201 50A

UL Listed, 30 Amp, 125/250 Volt, NEMA 10-30R, 3P, 3W, Flush Mtg Receptacle, Non-Grounding, Side Wired, Steel Strap; Heavy duty plastic construction



YCLD-3205 30A

Electrical Specifications

Dielectric Voltage Withstands 2000V per UL498;
Current Limiting: Full Rated Current;
Temperature Rise: Max 30C after 50 cyc OL at 150 pct rated current

Mechanical Specifications

Terminal ID: Brass-Hot, Green-Ground,
Terminal Accom.: White-Neutral; Up to 4 AWG

Material Specifications

Face & body Material: Heavy duty plastic;
Product ID: Ratings are permanently marked on device;
Line Contacts: Brass Double-Wipe;
Yoke: Zinc-Plated Steel

Environmental Specifications

Flammability: Rated V-2 per UL94;
Operating Temp.: -40C to 60C

AC Horsepower Ratings

At Rated Voltage: 2 HP

Standards and Certifications: UL498

Receptacle & Plug



YCLD-2122

YCLD-3714

YCLD-3715

Dimmer

Diva Dimmer 120V 60Hz



Rotary Dimmer 120V/60Hz



YCLD-4001 Single pole, 600W

YCLD-4001LA Single pole, 600W with light

YCLD-4040 single pole, 700W

YCLD-4002 Single pole, 1000W

YCLD-4002LA Single pole, 1000W with light

YCLD-4041 single pole, 600W

YCLD-4003 Three way, 600W

YCLD-4003LA Three way, 600W with light

YCLD-4042 Three Way, 700W

YCLD-4004 Three way, 1000W

YCLD-4004LA Three way, 1000W with light

YCLD-4043 Three Way, 600W



Nonmetallic Box



YCLD-8011



YCLD-8012

Switch/Outlet Boxes

Part No.	Volume (cu. In.)	Description	Size	Knockouts	Std. Ctn. Qty.	Std. Ctn. Wt. (lbs)
YCLD-8011	18	Single Gang with captive nails	27/8"D × 21/4"W × 33/4"L	2 (2 each end)	100	22
YCLD-8012	20	Single Gang with captive nails	31/4"D × 21/4"W × 33/4"L	2 (2 each end)	100	24

◆ Suitable for masonry walls



YCLD-8017



YCLD-8019

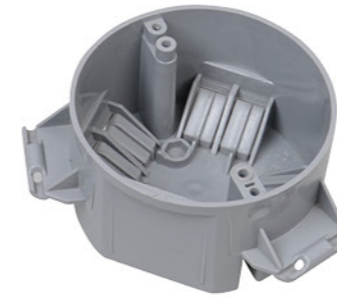


YCLD-8020

Meets NEMA OS-2

Part No.	Volume (cu. In.)	Description	Size	Knockouts	Std. Ctn. Qty.	Std. Ctn. Wt. (lbs)
YCLD-8017	32	Two Gang with captive nails	1"D × 4"W × 3 3/4"L	8 (4 each end)	50	16
YCLD-8019	44	Three Gang with captive nails	211/16"D × 33/4"W × 55/8"L	12 (6 each end)	50	21
YCLD-8020	60	Four Gang with captive nails and bracket support	21/2"D × 37/10"W × 73/5"L	12 (8 each end)	25	14

Nonmetallic Box



YCLD-8030



YCLD-8332

Ceiling

Part No.	Volume (cu. In.)	Description	Size	Integral Clamps	Std. Ctn. Qty.	Std. Ctn. Wt. (lbs)
YCLD-8030	18	Round Old Work Case 3 Zip-Mount™ retainers	23/4"D	4	100	24

Part No.	Volume (cu. In.)	Description	Size	Integral Clamps	Std. Ctn. Qty.	Std. Ctn. Wt. (lbs)
YCLD-8332	24	4" Square Box	4" × 4" × 2.16"	4	50	42



Wallplate



YCLD-7001

1 Gang Toggle Switch Cover,
Standard Size 2.75"x4.5"

YCLD-7001	Plastic
-----------	---------



YCLD-7091

1 Gang Toggle Switch Cover,
Standard Size 2.75"x4.5"

YCLD-7081	Brushed Stainless Steel
YCLD-7091	Polished Stainless Steel



YCLD-7002

2 Gang Toggle Switch Cover,
Standard Size 4.563"x4.5"

YCLD-7002	Plastic
-----------	---------



YCLD-7192

2 Gang Decora Switch Cover,
Standard Size 4.563"x4.5"

YCLD-7182	Brushed Stainless Steel
YCLD-7192	Polished Stainless Steel



YCLD-7103

3 Gang Decora Switch Cover,
Standard Size 6.375"x4.5"

YCLD-7103	Plastic
-----------	---------



YCLD-7104

4 Gang Decora Switch Cover,
Standard Size 8.188"x4.5"

YCLD-7104	Plastic
-----------	---------



YCLD-7092

2 Gang Toggle Switch Cover,
Standard Size 4.563"x4.5"

YCLD-7082	Brushed Stainless Steel
YCLD-7092	Polished Stainless Steel



YCLD-7003

3 Gang Toggle Switch Cover,
Standard Size 6.375"x4.5"

YCLD-7003	Plastic
-----------	---------



YCLD-7004

4 Gang Toggle Switch Cover,
Standard Size 8.188"x4.5"

YCLD-7004	Plastic
-----------	---------



YCLD-7105

5 Gang Decora Switch Cover,
Standard Size 10"x4.5"

YCLD-7105	Plastic
-----------	---------



YCLD-7106

6 Gang Decora Switch Cover,
Standard Size 11.81"x4.5"

YCLD-7106	Plastic
-----------	---------



YCLD-7201

1 Gang Duplex Receptacle Cover,
Standard Size 2.75"x4.5"

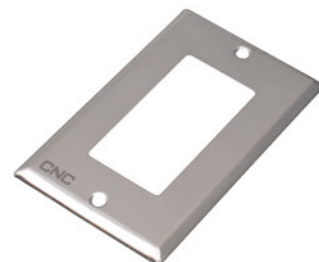
YCLD-7201	Plastic
-----------	---------



YCLD-7101

1 Gang Decora Switch Cover,
Standard Size 2.75"x4.5"

YCLD-7101	Plastic
-----------	---------



YCLD-7191

1 Gang Decora Switch Cover,
Standard Size 2.75"x4.5"

YCLD-7181	Brushed Stainless Steel
YCLD-7191	Polished Stainless Steel



YCLD-7102

2 Gang Decora Switch Cover,
Standard Size 4.563"x4.5"

YCLD-7102	Plastic
-----------	---------



YCLD-7291

1 Gang Duplex Receptacle Cover,
Standard Size 2.75"x4.5"

YCLD-7281	Brushed Stainless Steel
YCLD-7291	Polished Stainless Steel



YCLD-7202

2 Gang Duplex Receptacle Cover,
Standard Size 4.563"x4.5"

YCLD-7202	Plastic
-----------	---------



YCLD-7292

2 Gang Duplex Receptacle Cover,
Standard Size 4.563"x4.5"

YCLD-7282	Brushed Stainless Steel
YCLD-7292	Polished Stainless Steel

Wallplate



YCLD-7203

3 Gang Duplex Receptacle Cover,
Standard Size 6.375"x4.5"

YCLD-7203	Plastic
-----------	---------



YCLD-7293

3 Gang Duplex Receptacle Cover,
Standard Size 6.375"x4.5"

YCLD-7283	Brushed Stainless Steel
YCLD-7293	Polished Stainless Steel



YCLD-7107

2G Com Cover(Toggle & Decora),
Standard Size 4.563"x4.5"

YCLD-7107	Plastic
-----------	---------



YCLD-7207

2G Com Cover(Toggle & Duplex),
Standard Size 4.563"x4.5"

YCLD-7207	Plastic
-----------	---------



YCLD-7297

2G Com Cover(Toggle & Duplex),
Standard Size 4.563"x4.5"

YCLD-7287	Brushed Stainless Steel
YCLD-7297	Polished Stainless Steel



YCLD-7208

3G Com Cover(Toggle & Decora),
Standard Size 6.375"x4.5"

YCLD-7208	Plastic
-----------	---------



YCLD-7307

2G Com Cover(Decora & Duplex),
Standard Size 4.563"x4.5"

YCLD-7307	Plastic
-----------	---------



YCLD-7397

2G Com Cover(Decora & Duplex),
Standard Size 4.563"x4.5"

YCLD-7387	Brushed Stainless Steel
YCLD-7397	Polished Stainless Steel



YCLD-7491

1 Gang phone & Coaxial Cover,
Standard Size 2.75"x4.5"

YCLD-7481	Brushed Stainless Steel
YCLD-7491	Polished Stainless Steel

Wallplate



YCLD-7402

1 Gang Single Receptacle Cover,
Standard Size 2.75"x4.5"

YCLD-7402	Plastic
-----------	---------



YCLD-7492

1 Gang Single Receptacle Cover,
Standard Size 2.75"x4.5"

YCLD-7482	Brushed Stainless Steel
YCLD-7492	Polished Stainless Steel



YCLD-7501

1 Gang Blank Cover,
Standard Size 2.75"x4.5"

YCLD-7501	Plastic
-----------	---------



YCLD-7591

1 Gang Blank Cover,
Standard Size 2.75"x4.5"

YCLD-7581	Brushed Stainless Steel
YCLD-7591	Polished Stainless Steel



YCLD-7502

2 Gang Blank Cover,
Standard Size 4.563"x4.5"

YCLD-7502	Plastic
-----------	---------

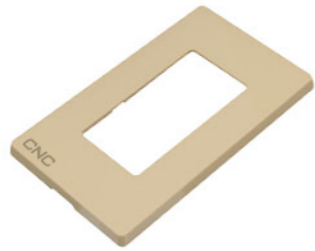


YCLD-7592

2 Gang Blank Cover,
Standard Size 4.563"x4.5"

YCLD-7582	Brushed Stainless Steel
YCLD-7592	Polished Stainless Steel

Wallplate



YCLD-7101A

1 Gang Screwless Cover,
Standard Size 2.75"x4.5"

YCLD-7101A	Plastic
------------	---------



YCLD-7601

1 Gang Broadband Cover,
Standard Size 2.75"x4.5"

YCLD-7601	Plastic
-----------	---------



YCLD-7602

2 Gang Broadband Cover,
Standard Size 2.75"x4.5"

YCLD-7602	Plastic
-----------	---------



YCLD-7603

3 Gang Broadband Cover,
Standard Size 2.75"x4.5"

YCLD-7603	Plastic
-----------	---------



YCLD-7604

4 Gang Broadband Cover,
Standard Size 2.75"x4.5"

YCLD-7604	Plastic
-----------	---------



Wallplate with led night light

Product Features

- Amp: 15A&20A
- Voltage: 125V
- Material: PC
- Color: white
- Batteries or Wire Required: No Batteries
- or Wires
- Feature: Receptacle wallplate with one light-operated and 3 LED nightlights, one LED nightlight is 0.01W, Pressure value is total 3V
- Color: White, Ivory, Black, Almond, Grey, Brown
- Standards: UL



YCLD-7101LED



YCLD-7201LED