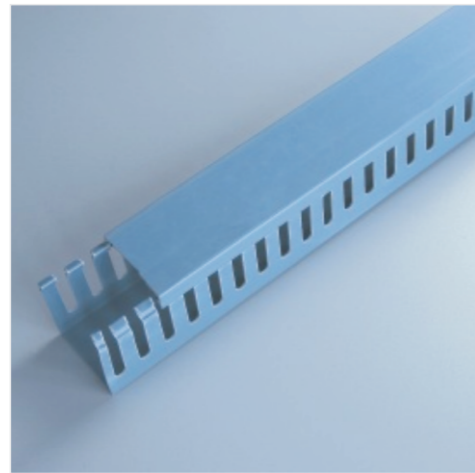
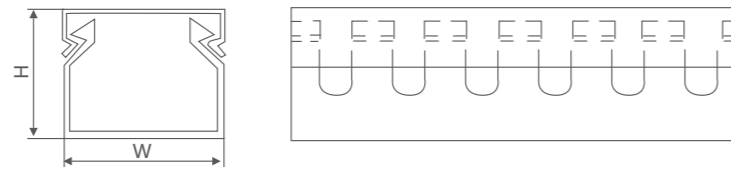


Tie Series



Insulating Distributing Slot

Material: Made from PVC (grey), good insulation and heat-resisting up to 85.
 Structure: Made up of duct bottom and lid, with two out-holes designed at the bottom.



Type	H×W (mm)	Contained wire (2.0 ²)	Length
2015	20×15	5-10 PCS	2m
2525	25×25	10-20 PCS	2m
3015	30×15	5-15 PCS	2m
3020	30×20	10-20 PCS	2m
3025	30×25	15-25 PCS	2m
3030	30×30	20-40 PCS	2m
3035	30×35	30-45 PCS	2m
3535	35×35	35-50 PCS	2m
4025	40×25	20-25 PCS	2m
4030	40×30	35-45 PCS	2m
4040	40×40	60-70 PCS	2m
5025	50×25	25-45 PCS	2m
5030	50×30	30-50 PCS	2m
5035	50×35	50-60 PCS	2m
5040	50×40	60-70 PCS	2m
5045	50×45	70-80 PCS	2m
5050	50×50	80-90 PCS	2m
5055	50×55	100-110 PCS	2m
5080	50×80	180-200 PCS	2m
50100	50×100	210-260 PCS	2m
8045	80×45	160-180 PCS	2m
8050	80×50	180-200 PCS	2m
8055	80×55	180-210 PCS	2m
8080	80×80	240-290 PCS	2m
80100	80×100	260-350 PCS	2m
100100	100×100	300-400 PCS	2m

