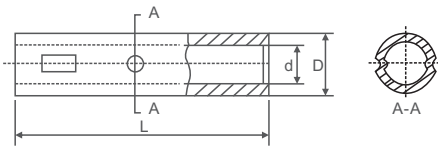


Note: GT-2-1.5 G: connecting tube; T: copper; 1: oil-block type; 1.5: conductor section.

GTY Copper Connecting Tube(Passing Through)



Catalog No.	Dimension(mm)		
	D	d	L
GTY-1.5	3.7	2.5	20
GTY-2.5	4	3	20
GTY-4	4.8	3.3	20
GTY-5.5	5.5	4.3	25
GTY-10	6.8	4.8	30
GTY-16	7.5	5.5	35
GTY-25	9	7	40
GTY-35	10.5	8.2	45
GTY-50	12.5	9.8	50
GTY-70	14.5	11.5	55
GTY-95	17.5	13.5	60
GTY-120	19.5	15	65
GTY-150	21	16.5	70
GTY-185	23.5	18.5	75
GTY-240	26.5	21	80
GTY-300	30	24	85
GTY-400	34	27	90
GTY-500	38	30	100
GTY-630	45	35	110
GTY-800	50	39	150
GTY-1000	56	44	170